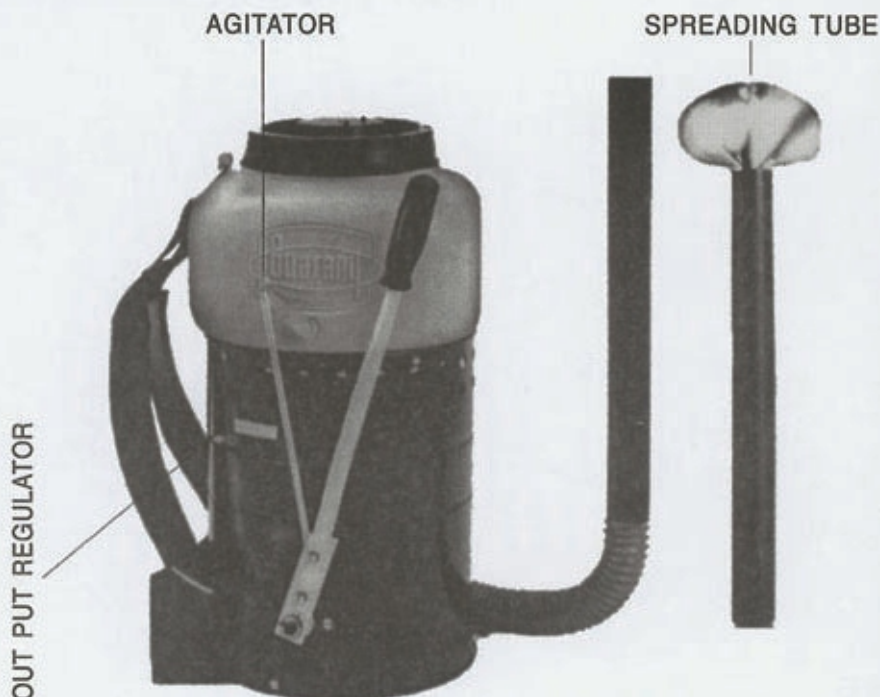


KNAPSACK DUSTER SUPER 4 - CODE 411-02

- **STRONG**
- **NEW**
- **EFFICIENT**



The most efficient and economical weapon to fight agricultural pests especially in areas where water supply is difficult. Introduces the following features:

- **SUPER TORQUE REDUCER:** To diminish the impact of sudden and harsh movements on the transmission box. New system "IN LINE".
- **REINFORCED BASE PLATE:** To improve the resistance of the metallic body and to protect the transmission box against impacts.
- **POWDER FEEDER WITH NYLON SWEEPERS:** Very easy to disassemble when necessary to replace the NYLON sweepers.
- **REINFORCED AGITATOR:** To ensure an uniform dosage even at low output rates. Ten sweepers per mixing cycle.
- **TRANSMISSION BOX SUPER:** With permanent lubrication. Individually run in and tested. Made from reinforced NYLON. Great durability.
- **MORE POWERFUL FAN:** Great output with a minimum of effort. Permits high output rates without accumulation of powder.
- **ERGONOMIC LEVER:** To facilitate the operation and improve the operator's comfort while working.

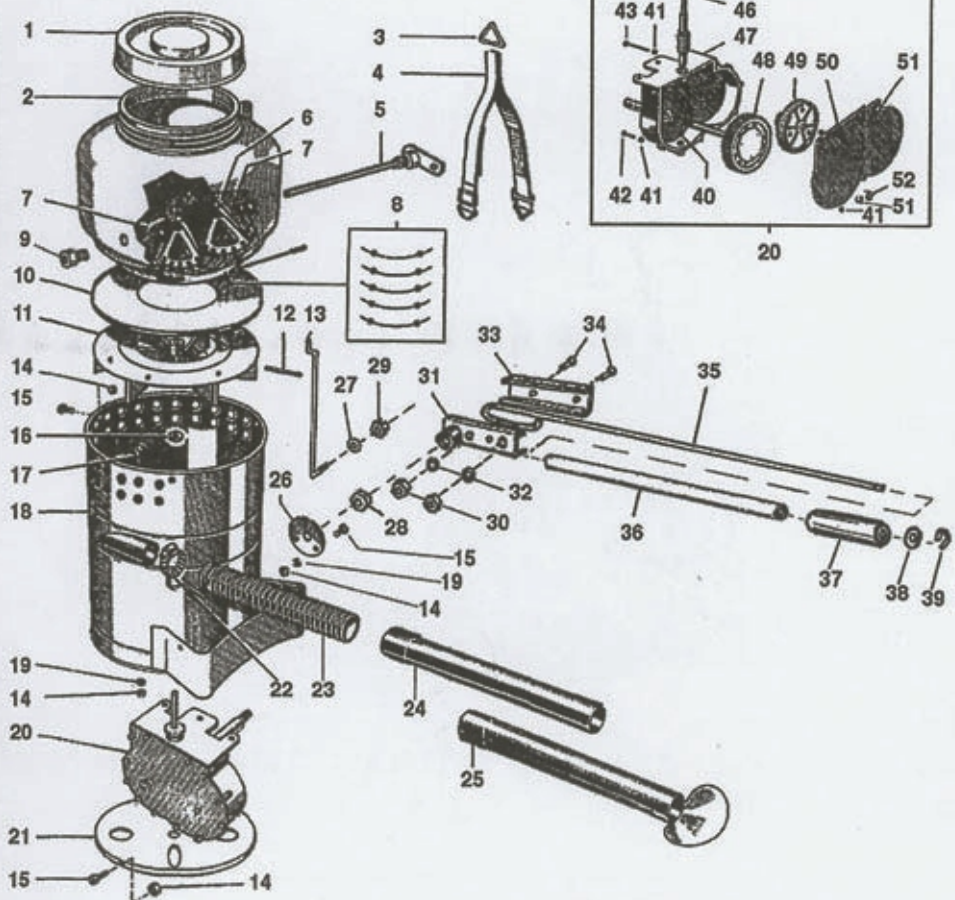
This new Knapsack Duster, for its design, high level of quality and high performance is undoubtedly the ideal machine for powder applications on tobacco plants, cotton, corn crops, etc...

SPECIFICATIONS

Maximum output 170 g/min. (0,66 pounds/min.)	Lubrication permanent
Tank capacity 8 kg (17,6 pounds)	Paint polyurethane
Tank material polyethylene	Net weight 6,2 kg (13,7 pounds)
Structural material tin plated steel	Gross weight 14,2 kg (31,3 pounds)
Bracing material galvanised steel	Packaging 335 x 335 x 565 mm (13,2"x13,2"x22,3")

SPARE PARTS

ITEM	DESCRIPTION	CODE
01	Chemical tank lid	2589
02	Chemical tank	9655
03	Triangular lid	3041
04	Carrying strap	9987
05	Mixing axle	9820
06	Agitator	9821
07	Nut 3/8"	2447
08	Service Kit K51 for the agitator	9823
09	Bearing	2269
10	Lid of fan chamber	3871
11	Fan rotor	4241
12	Cotter pin	3210
13	Driving rod	5769
14	Nut M5	2469
15	Screw M5 x 10	3465
16	Sealing washer	3464
17	Screw M5 x 15	2247
18	Body	9657
19	Lock washer M5	1080
20	Transmission box	9658
21	Reinforced base plate	5962
22	Clamp	3258
23	Flexible hose	3246
24	Discharge tube	3256
25	Spreading tube	9092
26	Driving axle support	3244
27	Plain washer	3483
28	Lock nut	5691
29	Selfbreaking nut	5274
30	Nut	2438
31	Internal lever support	4110
32	Lock washer	2439
33	External lever support	5766
34	Screw	5768
35	Flexible lever	5767
36	Lever protection	5770
37	Hand grip	5771
38	Washer	1049
39	Retention ring	5773
40	Ball	3216
41	Washer	3853
42	Screw	3358
43	Screw	3851
44	Felt washer	2278
45	Bush	3826
46	Rotor axle	9659
47	Gear box	9232
48	Driving gear	9640
49	Helicoidal gear	3357
50	Gear box cover	9233
51	Nut	3234
52	Oil plug	3852

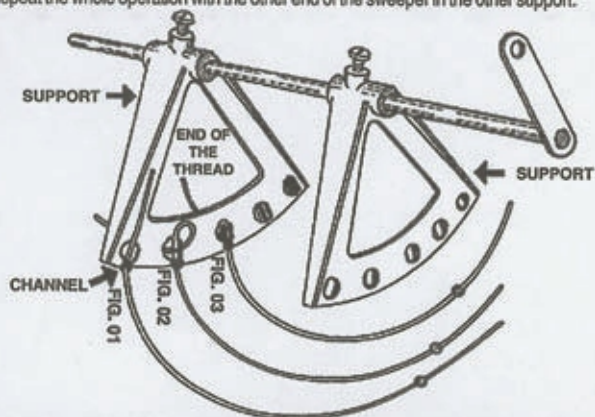


INSTRUCTIONS FOR USE

- 1- Fill the chemical tank with the chosen product which must be completely dry and free of leaves and other debris. Close tightly.
- 2- Move the output regulator to the intermediate position.
- 3- Don the machine and start operating the lever, beginning slowly until the desired speed is obtained.
- 4- Regulate the output in accordance with the desired speed. The greater the rate of movement, the greater the output.
- 5- At the end of the working day, completely close the output regulator, **but continue to operate the lever until there is no more powder left.**
- 6- When storing for a long period, wash the machine, carefully dry it and store with the lid open in a dry place.
- 7- Occasionally check the nylon thread sweepers and change when necessary. Each machine comes with a kit of 5 units.

REPLACING THE SWEEPERS

- 1- Insert the thread in the appropriate channel (Fig. 1).
- 2- Ensure that the end of the thread runs through the lateral hole of the channel (Fig. 2).
- 3- Pull the end of the thread with pliers.
- 4- Repeat the whole operation with the other end of the sweeper in the other support.



USEFUL ADVICE

When the product is completely exhausted from the tank, continue to pump for a few minutes until the discharge tube is totally clean, then, recharge the tank and start the application.

ATTENTION: To make it possible and easier the application of sulfur or any other product of difficult dispersion, add a small quantity of whitewash or industrial talc to the chosen product, mixing it properly.

3Any repairs should be made exclusively authorized dealers or at the factory.

ATTENTION

- Take great care when using agrochemicals.
- Wear overalls, safety vest, boots, hat, gloves, respirator and goggles.
- Wash overalls at the end of each day's work.
- Don't dust upwind or on windy days.
- Follow the instructions of both Guarany and the agrochemical manufacturer's closely.
- Wash the machine thoroughly before making repairs
- **AVOID WASTE OF AGROCHEMICALS**

Always quote the code number when ordering parts.